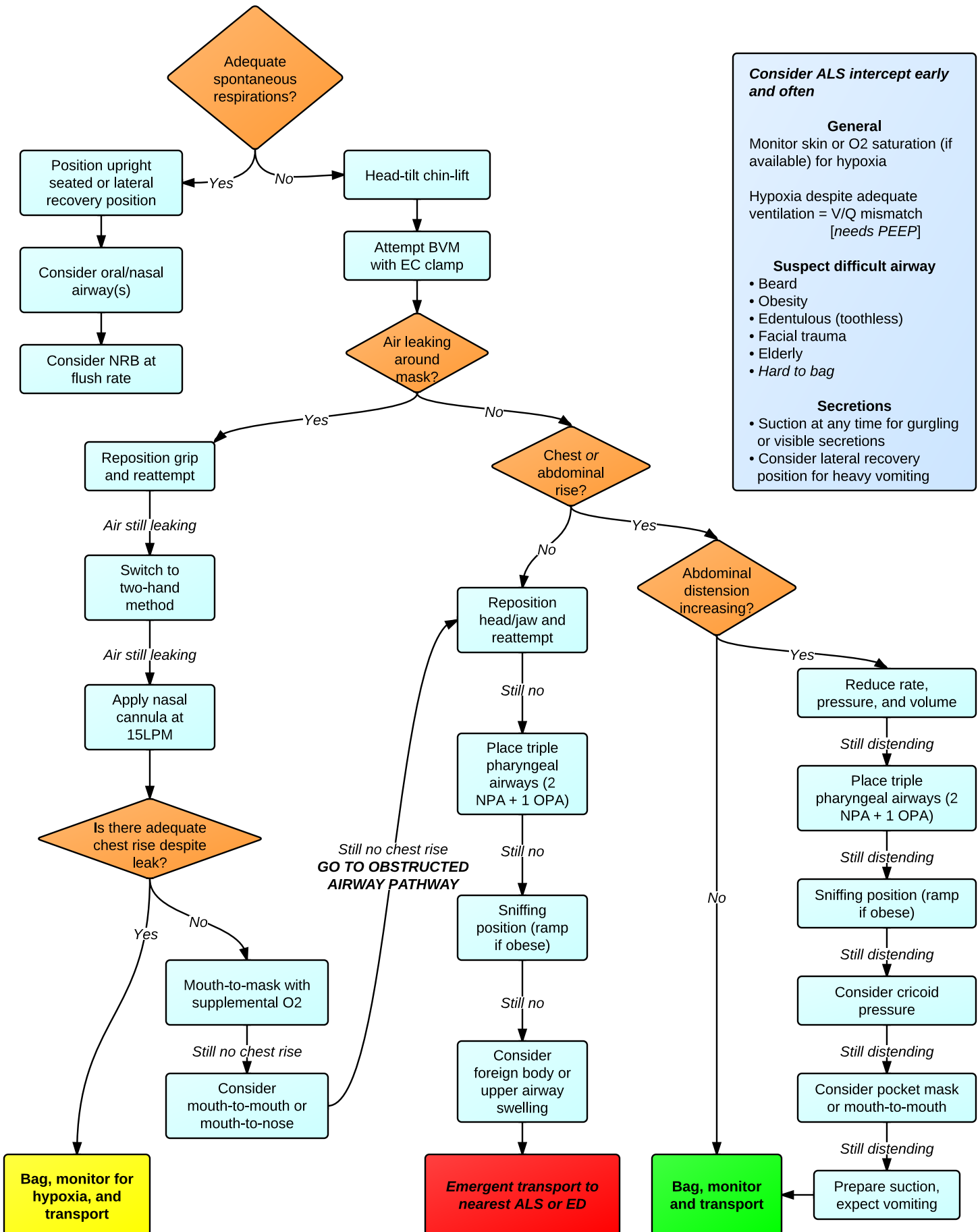


BLS Emergency Airway Algorithm

Brandon Oto
EMSBasics.com



Consider ALS intercept early and often

General
Monitor skin or O2 saturation (if available) for hypoxia

Hypoxia despite adequate ventilation = V/Q mismatch [needs PEEP]

Suspect difficult airway

- Beard
- Obesity
- Edentulous (toothless)
- Facial trauma
- Elderly
- Hard to bag

Secretions

- Suction at any time for gurgling or visible secretions
- Consider lateral recovery position for heavy vomiting